

PRODUCT INFORMATION PACKET

Model No: 215TTDR16101
Catalog No: H185B
3,900,DP,215T,3/60/230/460
Open Drip Proof (ODP)



Regal and Marathon are trademarks of Regal Beloit Corporation or one of its affiliated companies.
©2018 Regal Beloit Corporation, All Rights Reserved. MC017097E





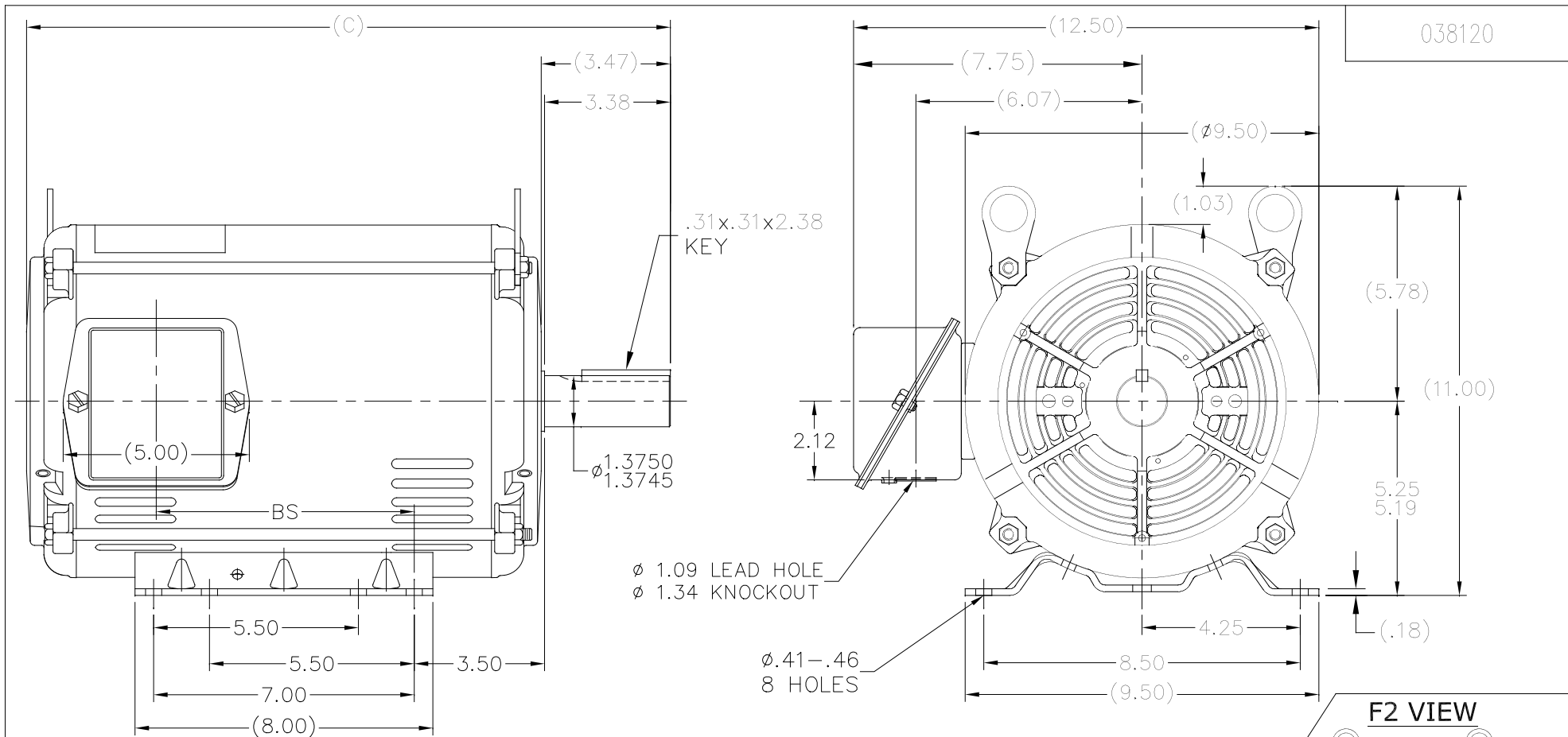
Nameplate Specifications

Output HP	3 Hp	Output KW	2.2 kW
Frequency	60 Hz	Voltage	230/460 V
Current	10.0/5.0 A	Speed	875 rpm
Service Factor	1.15	Phase	3
Efficiency	87.5 %	Duty	Continuous
Insulation Class	B	Design Code	B
KVA Code	H	Frame	215T
Enclosure	Drip Proof	Overload Protector	No
Ambient Temperature	40 °C	Drive End Bearing Size	6307
Opp Drive End Bearing Size	6206	UL	Recognized
CSA	Y	CE	Y
IP Code	12		

Technical Specifications

Electrical Type	Squirrel Cage Induction Run	Starting Method	Across The Line
Poles	8	Rotation	Reversible
Mounting	Rigid base	Motor Orientation	HORIZONTAL
Drive End Bearing	BALL	Opp Drive End Bearing	BALL
Frame Material	Rolled Steel	Shaft Type	T
Overall Length	21.60 in	Frame Length	15.53 in
Shaft Diameter	1.375 in	Shaft Extension	3.47 in
Assembly/Box Mounting	F1 ONLY		
Outline Drawing	038120-1545	Connection Diagram	EE7308

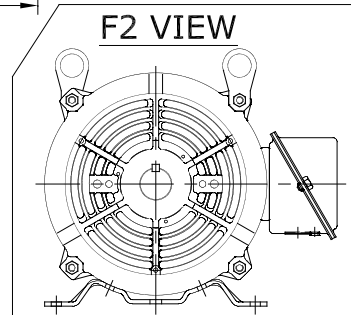
This is an uncontrolled document once printed or downloaded and is subject to change without notice. Date Created: 10/30/2018



038120

DASH	FR.	C	BS	MOUNTING
1545	215T	21.60	11.23	F1 OR F2 ONLY

- NOTES:
1. NAMEPLATE TO BE READ FROM C'BOX SIDE OF MOTOR.
 2. BOX CAN BE MOUNTED IN 90° STEPS.
 3. BOX CAN BE MOUNTED ON OPPOSITE SIDE BY REMOVING BRACKETS AND TURNING FRAME 180°. (EXCEPT AS NOTED.)



				TOLERANCES UNLESS SPECIFIED		Regal Beloit America, Inc.		DRAWN SR 11/10/2016		
				DEC.	INCHES			CHK SR 11/10/2016	APPD SR 11/10/2016	
12				.X	±.1	TITLE OUTLINE 210 FR. - BB - TS - DR. PR.		SCALE 1=4		
				.XX	±.03			REF		
				.XXX	±.005			FMF		
				.XXXX	±.0005	MAT'L.		PREV		
NO.	REVISION	BY & DATE	CHK	ANG	±7'30"	FINISH				
THIS DRAWING IN DESIGN AND DETAIL IS OUR PROPERTY AND MUST NOT BE USED EXCEPT IN CONNECTION WITH OUR WORK ALL RIGHTS OF DESIGN AND INVENTION ARE RESERVED THIS IS AN ELECTRONICALLY GENERATED DOCUMENT - DO NOT SCALE THIS PRINT				RFP	CAD FILE 298-0360		SIZE	DRAWING NO.	PAGE 1 OF 1	REV.
				DIST	LB	A		038120	--	



P.O. BOX 8003
WAUSAU, WI 54401-8003
PH. 715-675-3311

DATA VOLTS: 460

CERTIFICATION DATA SHEET

CUSTOMER P.O. #:
 ORDER #: EE7308 REFERENCE MODEL #: 215TDR16101
 CONN. DIAGRAM: 038120-1545 CAT #: H1858
 OUTLINE: 038120-1545 CUSTOMER PART #:
 WINDING: 215869 NONE 1 MOUNTING: F1 ONLY
 SPEED:
 TYPICAL MOTOR PERFORMANCE DATA

HP	KW	SYNC RPM	FL RPM	FRAME	ENCLOSURE	TYPE	KVA CODE	DESIGN
3	2.2	900	875	215T	DP	TDW	H	B

PH	HZ	VOLTS	AMPS	START TYPE	DUTY	INSL	S.F.	AMB	ELEV.
3	60	230/460	10/5	ACROSS-THE LINE	CONT	B	1.15	40	3300
	F.L. EFF	87.5	3/4 LD EFF	86.5	1/2 LD EFF	85.1	GTD EFF	ELECT. TYPE	
	F.L. PF	64.0	3/4 LD PF	58.3	1/2 LD PF	46.4	84.0	SQ CAGE IND RUN	

F.L. TORQUE	LR AMPS @ 460 V	L.R. TORQUE	B.D. TORQUE	F.L. RISE (°C)
18.0 LB-FT	24.0	27.0 LB-FT	46.0 LB-FT	256%
@ 3 FT.	POWER	ROTOR WK ²	MAX. LOAD WK ²	SAFE STALL TIME
62 DBA	71 DBA	1.00 LB-FT ²	0 LB-FT ²	20 SEC.
				START/SHOUR
				4
				MOTOR WGT
				125 LB.

*** SUPPLEMENTAL INFORMATION ***

DE BRACKET TYPE	ODE BRACKET TYPE	MOUNT TYPE	MOTOR ORIENTATION	SEVERE DUTY	HAZARDOUS LOCATION	DRIP COVER	SCREENS	PAINT
STANDARD	STANDARD	RIGID	HORIZONTAL	NO	NONE	NO	NONE	BLACK (ENAMEL)

BEARINGS	GREASE	SHAFT TYPE	SPECIAL DE	SPECIAL ODE	SHAFT	MATERIAL	FRAME MATERIAL
DE BALL 6307	POLYREX EM	T	NONE	NONE	1144	STRESSPROOF (C-223)	ROLLED STEEL

THERMOSTATS	PROTECTORS	WDG RTD's	BRG RTD's	THERMISTORS	CONTROL	SPACE HEATERS
NONE	NOT	NONE	NONE	NONE	FALSE	NA

R1 (ohms/ph)	R2 (ohms/ph)	X1 (ohms/ph)	X2 (ohms/ph)	Xm (ohms/ph)	VIBRATION (in/sec)	FLOAT
2.1	2.261	8.864	10.69	82.964	0.150	ODE

* N		INVERTER TORQUE: NONE	
O	INV. HP SPEED RANGE: NONE		
T	ENCODER: NONE		
E	BRAKE: NONE		
S	FT-LB: NONE		
	VOLTAGE: NONE		
	HZ: NONE		

PREPARED BY: FAREEDA DUDEKULA
 DATE: 9/10/2018
 FORM: 3531 REV 4 2/27/06
 UL: V-INS, CONST UL REC

Data Sheet

215TTDR16101



Submital
Data @ 460 V

Date: 9/10/2018
Customer: _____
Attention: _____
Submitted by: FAREEDA DUDEKULA

Load	Motor Load Data									
	0%	25%	50%	75%	100%	115%	125%	LR		
Current (Amps)	3.1	3.3	3.6	4.2	5.0	5.4	5.8	24.0		
Torque (ft-lb)	0.00	4.5	9.0	13.5	18.0	20.5	22.5	27.0		
RPM	900	892	885	880	875	870	865	0		
Efficiency (%)		79.7	85.1	86.5	87.5	86.9	86.4			
P.F. (%)	5.9	27.2	46.4	58.3	64.0	68.6	69.2	40.0		

	Motor Speed Data						Information Block							
	LR	Pull-Up	BD	Rated	Idle		HP	Sync. RPM	Frame	Enclosure	Construction	Voltage	Frequency	Design
Speed (RPM)	0	450	770	875	900		3.0	900	215364TFC6081	DP	TDW	230/460	60	B
Current (Amps)	24.0	24.5	16.0	5.0	3.1									H
Torque (ft-lb)	27.0	24.5	46.0	18.0	0.00									1.15

Graph showing Efficiency (%), P.F. (%), and Current (Amps) vs Load (0% to 140%).

HP	3.0			
Sync. RPM	900			
Frame	215364TFC6081			
Enclosure	DP			
Construction	TDW			
Voltage	230/460 V			
Frequency	60 Hz			
Design	B			
LR Code letter	H			
Service Factor	1.15			
Temp Rise @ FL	40 °C			
Duty	CONT			
Ambient	40 °C			
Elevation	1,000 feet			
Rotor/Shaft wk ²	1.00 Lb-Ft ²			
Ret Wdg	215869 NONE			
Sound Pressure @ 1M	62 DBA			
VFD Rating	NONE			
Outline Dwg	038120-1545			
Conn. Diag	EE7308			
Additional Specifications:				
0				
0				
R1	R2	X1	X2	Xm
2.1000	2.2810	8.8640	10.6900	82.9640

